



Equity & Inclusion: A World Class Education for All Students

Session 3: Providing more Equitable Educational Opportunities in Australian Schools

Session 4: High Impact Leadership for Equity & Inclusion

Date: 25th March 2022

Time: 8:30am – 4:30pm

Venue: Hickinbotham Hall, National Wine Centre (corner of Botanic and Hackney Roads)
Adelaide

- Key Speakers:**
- (i) Professor Pasi Sahlberg
 - (ii) Associate Professor Scott Eacott
 - (iii) Jayne Heath - ASMS, Rosie Heinicke - Craigmore HS & Penny Tranter - Seaview HS plus Caitlin Senior (University of NSW)
 - (iv) Margot Foster & Assistants: Kirsty Gebert, Jason Loke & Natasa Penna

8:00am REGISTRATION

8:30am **WELCOME & INTRODUCTORY REMARKS**

JAYNE HEATH

Chief Executive, SA Secondary Principals' Association



8.40am **SPONSOR SPOTS**

8:45am **WORKSHOP PRESENTATION: "FACING THE EQUITY & INCLUSION CHALLENGES IN SA SCHOOLS"**

Professor Pasi Sahlberg with Jayne Heath (ASMS), Rosie Heinicke (Craigmore HS), Penny Tranter (Seaview HS) and Caitlin Senior (University of NSW)



10:25am SPONSOR SPOTS

10:30am MORNING TEA

11:00am KEYNOTE PRESENTATIONS: "EQUITY & EXCELLENCE IN SCHOOL EDUCATION: POLICIES, PRACTICES AND PEDAGOGY FOR GOOD SCHOOLS IN AUSTRALIA."

Professor Pasi Sahlberg



12:00pm SPONSOR SPOTS

12:05pm LUNCH

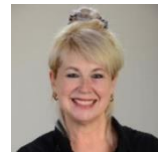
1:00pm KEYNOTE: "THE CHARACTERISTICS OF HIGH IMPACT LEADERS"

Associate Professor Scott Eacott. Deputy Head of School of Education, UNSW



2:15pm WORKSHOP: "LEARNER AGENCY: A DRIVER FOR EQUITY & INCLUSION."

Margot Foster with Kirsty Gebert, Jason Loke & Natasa Penna



3:25pm CLOSING REMARKS

3:30pm NETWORKING HOUR (ON THE TERRACE)

4:30pm CLOSE
