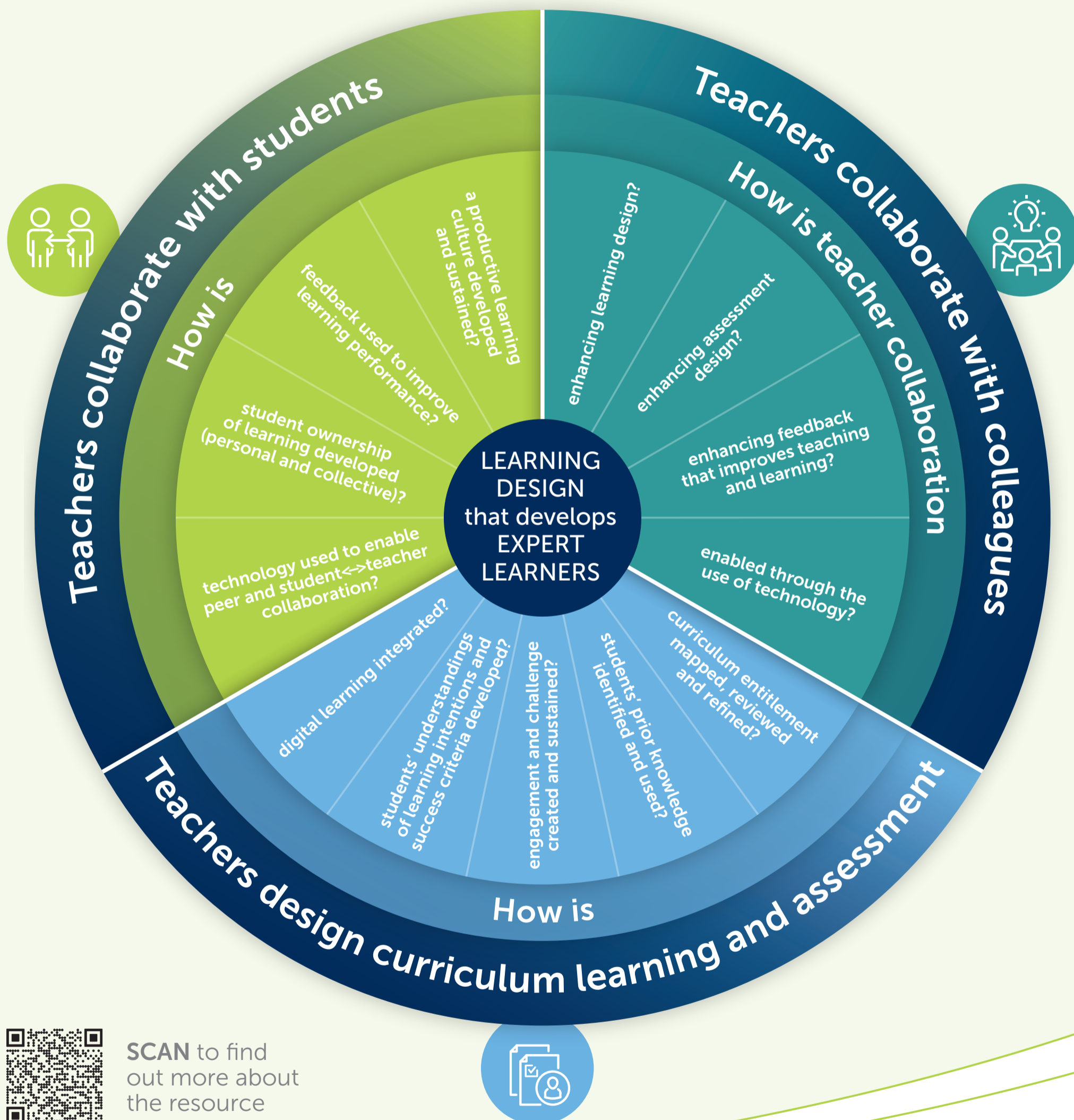


LEADING WORLD-CLASS TEACHING AND LEARNING

Navigating the curriculum to develop expert learners

EXPERT LEARNERS | It's not just what students know, it's what they can do with what they know.

EXPERT TEACHERS | World-class contemporary teachers co-design curriculum learning and assessment, enabling students to demonstrate and use knowledge, skills and capabilities in unfamiliar contexts.¹



SCAN to find out more about the resource

<http://TLinSA.2.vu/LeadingWorldClassTchLrn>

¹ This resource is informed by the 4 domains of the SA Teaching for Effective Learning (TfEL) framework; what is emerging as highly effective practice from the Learning Design, Assessment and Moderation (LDAM) strategy; the advice outlined in the SASPA 'Educating in the 21st Century' discussion paper; and the AITSL Teacher Standards.