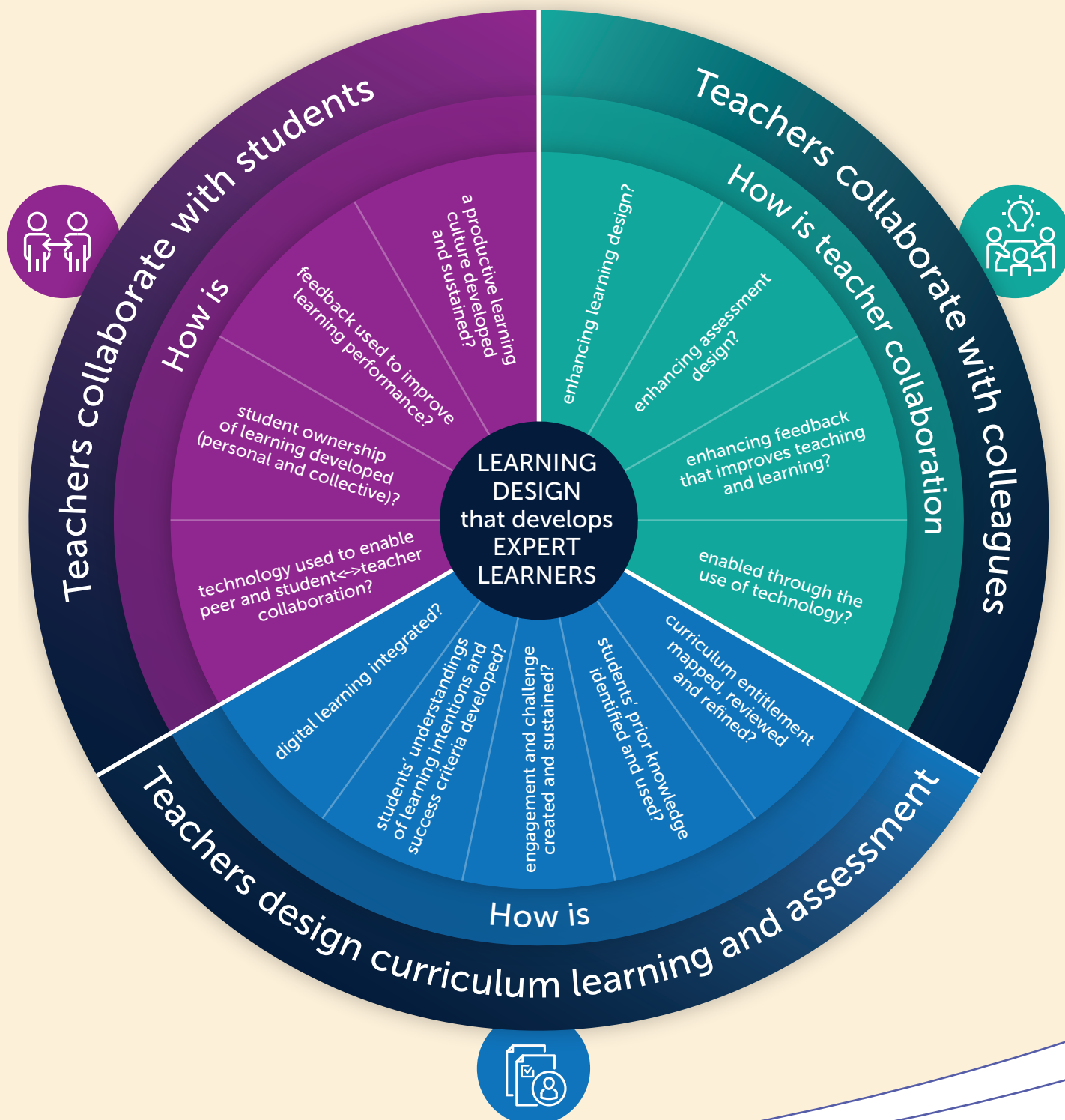


Leading world-class teaching and learning

Navigating the curriculum to develop expert learners

EXPERT LEARNERS | It's not just what students know, it's what they can do with what they know.

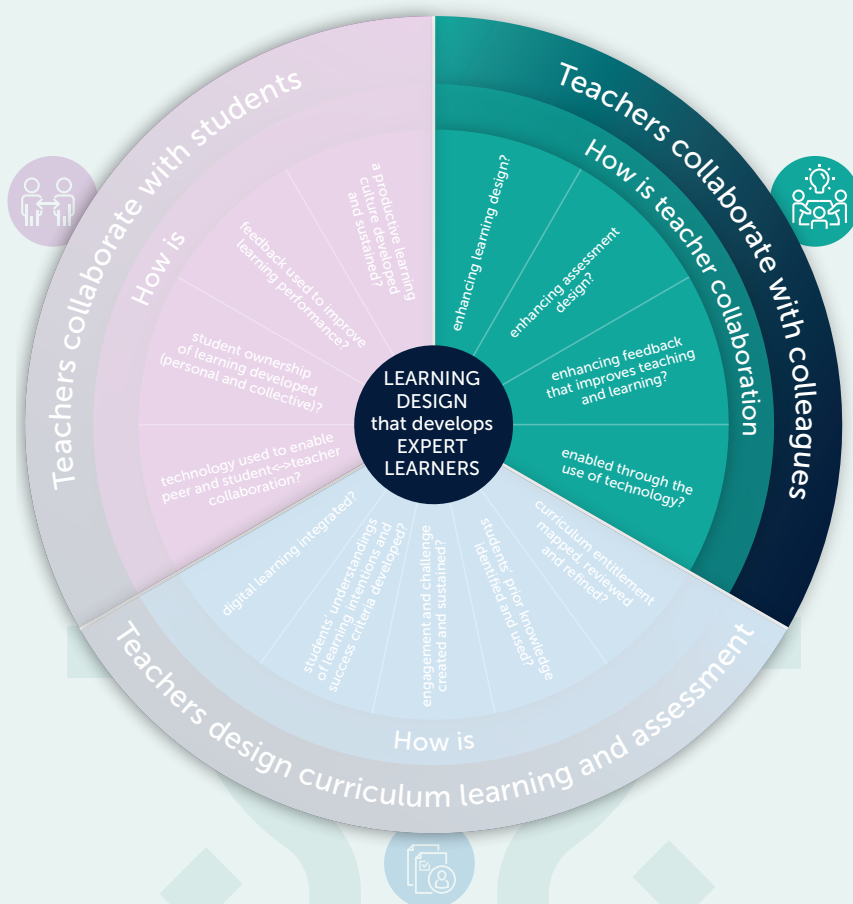
EXPERT TEACHERS | World-class contemporary teachers co-design curriculum learning and assessment, enabling students to demonstrate and use knowledge, skills and capabilities in unfamiliar contexts.¹



¹ This resource is informed by the 4 domains of the SA Teaching for Effective Learning (TfEL) framework; what is emerging as highly effective practice from the Learning Design, Assessment and Moderation (LDAM) strategy; the advice outlined in the SASPA 'Educating in the 21st Century' discussion paper; and the AITSL Teacher Standards.

LEARNING DESIGN that develops EXPERT LEARNERS

Teachers collaborate with colleagues

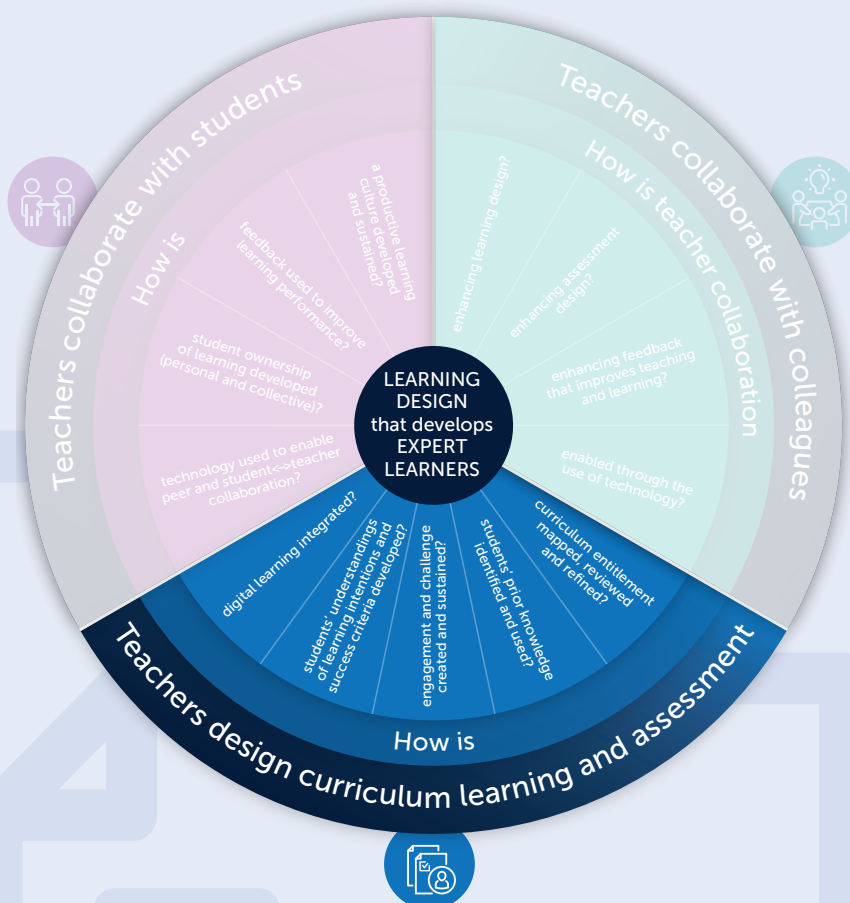


How is teacher collaboration:

- enhancing learning design?
- enhancing assessment design?
- enhancing feedback that improves teaching and learning?
- enabled through the use of technology?

LEARNING DESIGN that develops EXPERT LEARNERS

Teachers design curriculum learning and assessment

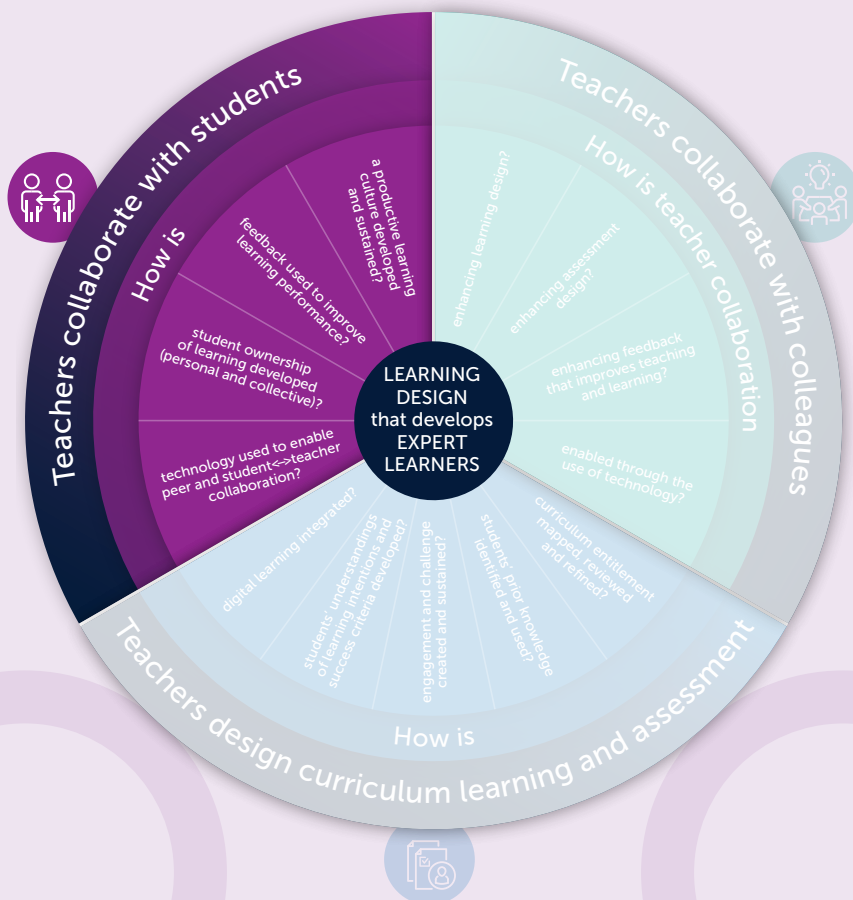


How is:

- digital learning integrated?
- students' understandings of learning intentions and success criteria developed?
- engagement and challenge created and sustained?
- students' prior knowledge identified and used?
 - curriculum entitlement mapped, reviewed and refined?

LEARNING DESIGN that develops EXPERT LEARNERS

Teachers collaborate with students



How is:

- a productive learning culture developed and sustained?
- feedback used to improve learning performance?
- student ownership of learning developed (personal and collective)?
- technology used to enable peer and student<-->teacher collaboration?